



Peak® Steel Stair Stringer and Connector

SKU 72550, 72555, 72560, 72565, 72570, 72575, 72580, 72610, 72611

Certificate of Compliance

Building Code of Australia 2022, Volume Two

DISCLAIMER

WARNING

Comply with all applicable building codes. Before using this product, ensure foundation is suitable. Not suitable for all applications or any commercial use. Do not overload. Wear protective attire and eyewear.



**ENGINEERING EVALUATION CERTIFICATE
DESIGN OF:
PEAK STRINGERS 1, 2, 3, 4, 5, 6, & 7-Tread, and
PEAK STRINGER CONNECTORS 4, 5, 6-Tread & 7-Tread**

This certificate is issued by: Acronem Consulting Australia Pty Ltd

This certificate is issued to: Peak Products Corporation,
c/- 27 Zilla Court, Dandenong,
Victoria, 3175, Australia

I hereby certify the structural adequacy of Peak Products Corporation,

- Peak Stringers (1, 2, 3, 4, 5, 6, & 7-Tread), and
- Peak Stringer Connectors (4,5,6-Tread) & (7-Tread),

for use in domestic and residential activities in self-contained dwellings, when installed in accordance with the Design Documents listed below to independently verified supporting structures, to resist,

- Uniformly distributed action of 2.0kPa, and
- Concentrated action of 2.7kN,

determined in accordance with *AS/NZS 1170.1:2002 Table 3.1 Reference Values of Imposed Floor Actions, Domestic and residential activities, Self-contained dwellings*, pursuant to demonstrating compliance with,

- NCC 2022 Building Code of Australia Volume Two, Performance Requirement H1P1 Structural stability and resistance to actions.

Structural design verification has been carried out with reference to:

1. The Design Documents listed below,
2. AS/NZS 1170.0 Structural Design Actions, Part 0: General Principles,
3. AS/NZS 1170.1 Structural Design Actions, Part 1: Permanent, imposed and other actions,
4. AS/NZS 4600:2005 Cold-formed steel structures, and
5. AS 4100:1998 Steel structures.

Subject to the following conditions:

- i. Product selection and installation shall be made by a competent person who is conversant with the application and technical aspects of the product, who has ready access to the relevant technical information related to the product installation.
- ii. Product installation shall only be carried out to supporting structures independently verified as capable of providing the necessary structural support.
- iii. Each tread must consist of a single piece of material with a minimum width of 240mm and a minimum thickness of 41mm (to ensure a 125mm sphere will not pass between the treads) rigidly connected to each Peak Stringer by at least two connectors.



Design documents:

Specifications:	Prepared by:	Date/Version:
Peak Stringer - Installation Instructions, <i>Peak Steel Stringers – Installation Instructions V1.pdf</i> (Attachment 1)	Peak Products Corporation	Undated
Peak Stair Stringer Connector For 4-Tread, 5-Tread, 6-Tread, Installation Instructions, Australian Version, Model 72610 (<i>72610_SSC_InstalGuide_V1.png</i>) (Attachment 2)	Peak Products Corporation	72610_SSC_InstalGuide_V1
Peak Stair Stringer Connector For 7-Tread, Installation Instructions, Australian Version, Model 72611 (<i>72611_SSC_InstalGuide_V1.png</i>) (Attachment 3)	Peak Products Corporation	72611_SSC_InstalGuide_V1
Peak Stair Stringers and Stair Stringer Connectors Details, (17 Sheets) (<i>Stair Riser + Extension Bracket AUS Compliance-R0A-V2.pdf</i>) (Company Confidential) (Attachment 4)	Peak Products Corporation	Various as per attached drawings. Updated February 2025

Engineer:

Name: Cameron Chick BE(Hons), Ph.D, M.AIRAH, RPEQ
 Registered Professional Engineer Qld. (Structural): 15370, Vic. (Civil): PE0000967
 for and on behalf of Acronem Consulting Australia Pty Ltd
 Date of issue: 11th March 2025

Signature:

Questions relating to the purchase and/or use of this product should be directed to the Peak Products dedicated Customer Service Team.

Please contact:

Email: Support@peakproducts.com.au

Phone: 1300 734 714



ATTACHMENT 1: Peak Stringer - Installation Instructions

Simple 1-2-3 Installation

CAUTION Before beginning work, read and follow DETAILED instructions from below or from www.peakproducts.com.au. Building codes may vary. Always understand and comply with your local building codes.

Important Information

Pine step tread applications only: For stairs up to 1200 mm wide, use two stringers spaced a maximum of 950 mm apart. For stairs over 1200 mm wide, space stringers not more than 600 mm apart. Only use 240 mm x 45 mm step treads.

Spotted Gum / Merbau / Ironbark step tread applications only: For stairs up to 1200 mm wide, use two stringers. For stairs over 1200 mm wide, space stringers not more than 600 mm apart. Only use 240 mm x 43-45 mm step treads.

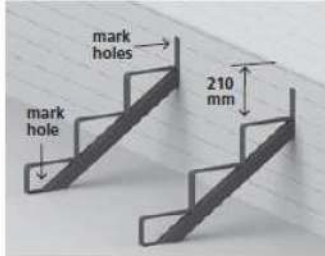
All applications: Step treads may overhang end stringers by 125 mm and must have a slip-resistant finish, or non-skid strip or treatment near the edge of the nosing.

Suggested deck height approx.
660 mm

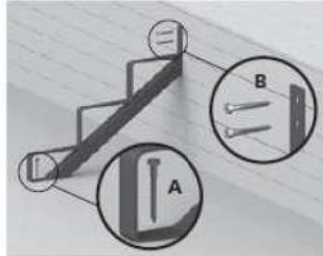
Stringer extends from deck approx.
725 mm

Tools and materials required

- Drill and drill bits
- Level
- Measuring tape
- Socket or spanner: 13 mm, 16 mm
- Fasteners (not included)
- Timber treads (not included)



- 1** Determine the location of all stringers and ensure the top tread support is 210 mm down from upper deck surface. Then, for each stringer, level and mark the two fastener locations on the deck rim, and one fastener location on the lower deck surface.



- 2** **A:** Attach bottom of each stringer using M10 x 50 mm coach screws* for timber, or M10 x 60 mm Ramset™ WERCS Ankascrew™ anchors for concrete.
B: Attach top of each stringer using M10 x 50 mm coach screws* for timber, or M10 x 60 mm Ramset™ WERCS Ankascrew™ anchors for concrete.

*Minimum embedment of threaded portion of screw must be 45 mm into innermost structural member. Material of steel coach screws shall be given in AS/NZS 4291.1, for property classes 4.6 and 4.8.




- 3** Install each timber tread using M8 x 60 mm cup head bolts, nuts and washers.

WARNING No representation or warranty is given that your particular application of these products complies with relevant building codes or that the fasteners used are appropriate for your application. Consult with professionals and local building officials before beginning work: (i) to ensure compliance with relevant building codes for your application and for your proposed use of fasteners; (ii) to ensure the integrity of the structural components in connection with which these products are to be used; (iii) to identify appropriate safety gear that is to be used during installation such as a safety harness when working above ground; (iv) to ensure that the work area is free from utilities, services and hazards; and (v) to clarify any instructions or warnings that may not be clear. Work in a safe manner wearing protective gear such as gloves, eyewear, headwear, footwear and clothing. When using tools comply with operation manuals and instructions. Installation materials may have sharp edges and could fragment or splinter during or as a result of handling or cutting. Do not use these products in connection with any substance that is or may be harmful or corrosive to the products. Inspect and maintain these products and the structural components that they are used in connection with on a regular basis, using professionals when appropriate.

Peak Products Corporation shall not be liable for any loss or damage resulting from the improper installation or improper use of this product, subject to any contrary provision of the Australian Consumer Law in Australia. Peak products and associated materials are protected by patents, designs, copyrights and/or trademarks used under license from Peak Innovations Inc.



ATTACHMENT 2: Peak Stair Stringer Connector For 4-Tread, 5-Tread, 6-Tread, Installation Instructions, Australian Version, Model 72610




Stair Stringer Connector
For 4-Tread, 5-Tread and 6-Tread

Installation Instructions
Australian Version
Model 72610

Contents

- 1x Stair Stringer Connector
- 4x M8 carriage bolt
- 4x M8 flat washer
- 4x M8 spring washer
- 4x M8 hex nut

- 1x M10 hex bolt
- 2x M10 flat washer
- 1x M10 spring washer
- 1x M10 hex nut

 **Caution:** with Standard AS/NZS 1590.2210 Staircase Ridge sections, timber treads or deck boards, always use appropriate fasteners with your local building codes.

CAUTION: Before beginning work, read and follow DETAILED instructions from below or from www.peakproducts.com.au. Building codes may vary. Always understand and comply with your local building codes.

Important Information

Pre-stap floor applications only: For stairs up to 1200mm wide, use two stringers spaced a maximum of 950mm apart. For stairs over 1200mm wide, space stringers not more than 600mm apart. Only use 240mm x 45mm step treads.

Spotted Gum / Merbau / Ironbark step tread applications only: For stairs up to 1200mm wide, use two stringers. For stairs over 1200mm wide, space stringers not more than 600mm apart. Only use 240mm x 43-45mm step treads.

All applications: Step treads may overhang end stringers by 125mm and must have a slip resistant finish, or non-skid strip or treatment near the edge of the nosing. All stair stringer connectors shall be supported by a finisher post with timber braces.

Tools and materials required

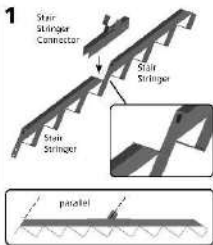
All applications:

Hammer	Drill bits for metal: 9mm, 11mm	M8 Flat washers
Measuring tape	17mm Hex Driver Bit	M8 Hex nuts
Level	Socket or spanner: 13mm, 17mm	Timber treads
Drill	100 x 40mm Wood screws	90 x 60mm Timber posts
Drill bits for wood: 7mm, 9mm	100 x 65mm Wood screws	90 x 35mm Timber bracing
	M8 x 60mm Cup head bolts	

Attaching to wood surfaces:
M10 x 50mm min. Coach screws

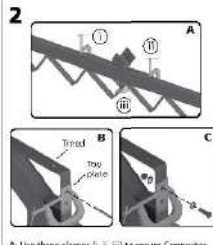
Attaching to concrete surfaces:
Hammer drill
Drill bit for concrete: M10
M10 x 60mm Ramset™ WERCS
Ankacrow™ Concrete anchors

1 Stair Stringer Connector



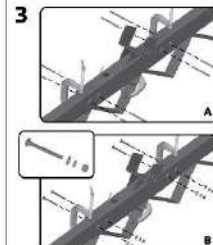
Place stringers upside down and end-to-end on a flat surface. Place Connector over the joint area, and then move horizontally as needed to ensure Connector is fully seated in the right direction on the stringers.

2



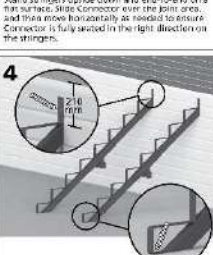
A: Use three clamps (A, B, C) to secure Connector and stringers at each joint.
B: Turn the assembly right way up. Then use a M10 drill bit to drill a hole through the hole through the metal at the pre-drilled location on the top plate.
C: Fasten tread to top plate using M10 bolt, nut and washers.

3



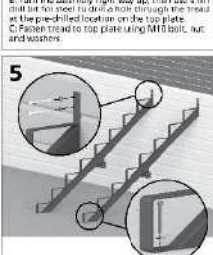
A: Use a 9mm drill bit for steel to drill eight holes through open square on the Connector.
B: Secure Connector to stringers using four M8 bolts, nuts, washers, and spring washers.
C: Repeat steps 1-3 for all Connectors and stringers.

4



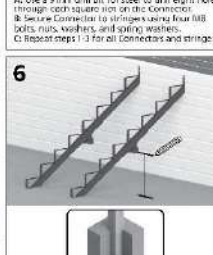
Determine the location of all stringers and make sure top board supports it 20mm down from upper deck surface (this may vary based on local codes). Then for each stringer, mark the three fastener locations on the deck rim and lower deck surface.

5



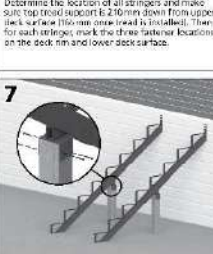
Attach all stringers using M10 x 50mm coach screws* for timber or M10 x 60mm Ramset™ WERCS Ankacrow™ anchors for concrete (not provided). Minimum embedment of threaded portion of screw must be 45mm into lowest structural member. Marking of deck cover screws shall be given a 4000-100-1, for property classes A5 and A6.

6



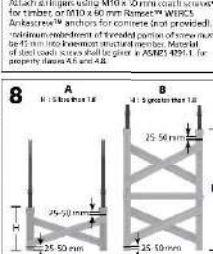
Measure and cut 90 x 90mm timber post (not provided) to fit between Connector and lower deck surface, leaving sufficient length for embedment into concrete. Ensure that depth of post into concrete and anchor strength comply with all relevant building codes, regulations, standards, and Local Authority requirements.

7



Secure 90 x 90mm timber post to Connector using four 100 x 60mm screws (not provided).


8



A: If 50mm thick
B: If 35mm thick

Measure and cut 90 x 90mm timber brace (not provided). If post height (H) divided by post spacing (S) is less than 1.0, apply two braces according to diagram A (see above). Otherwise, apply five braces according to diagram B (see above). Use two 100 x 60mm screws (not provided) to secure timber braces at each connection. End dist. min. 36mm, edge dist. min. 25mm, screw spacing min. 35mm. Ensure the timber braces are 25-30mm away from the connections at each end of the timber post.

9



Install each timber tread using M8 x 60mm cup head bolts, nuts and washers (not provided).

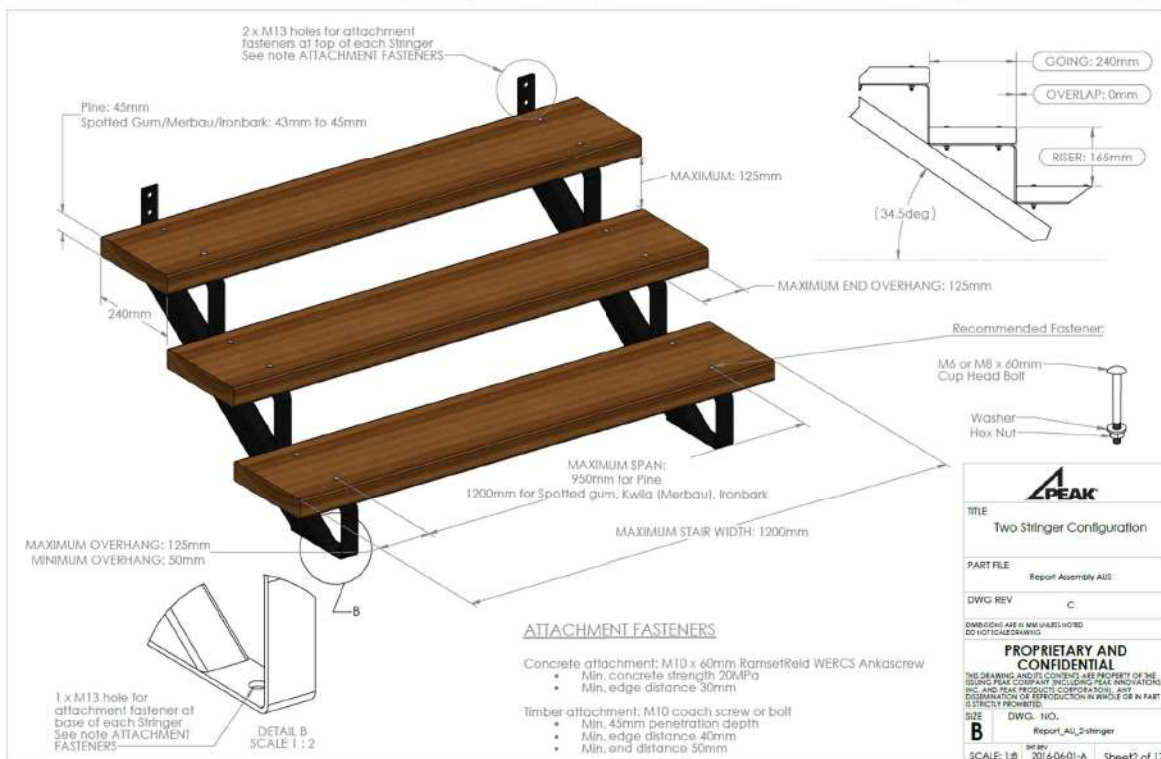
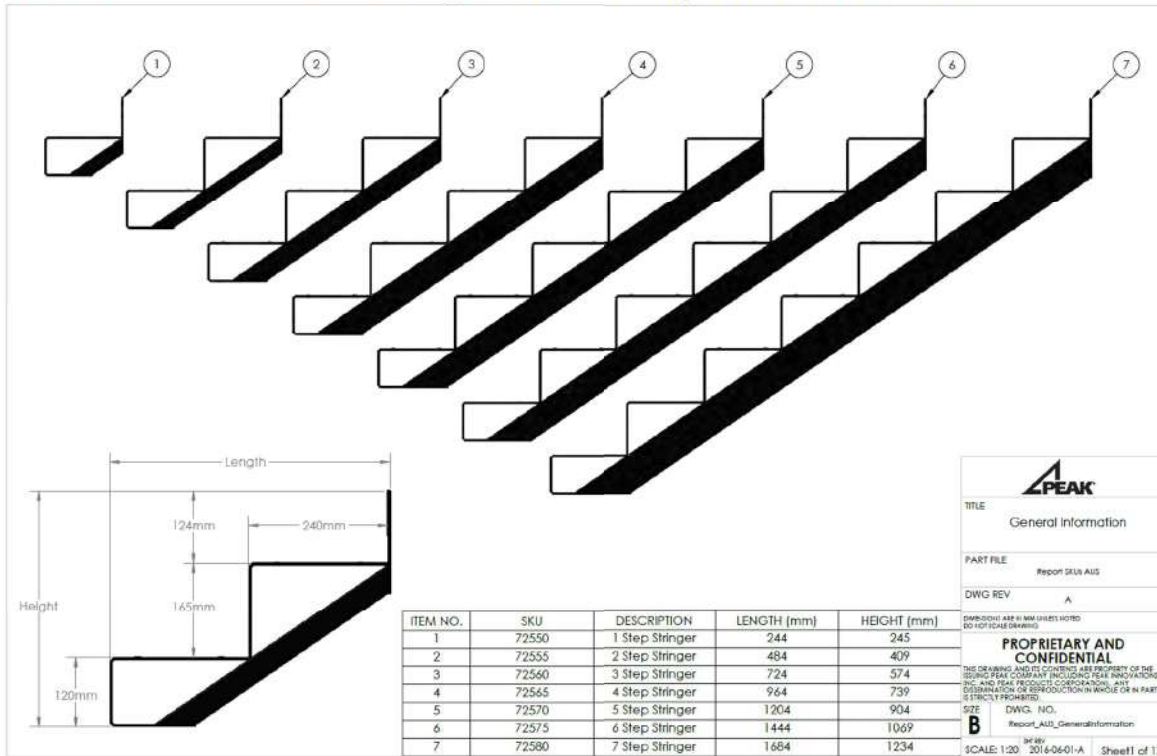
WARNINGS: An application or warranty is given that your particular application of these products complies with relevant building codes or that the fasteners used are appropriate for your application. Consult with your local and local building codes before beginning work, so to ensure compliance with relevant building codes for your application and for your proposed use of fasteners. Do to ensure the integrity of the structural components in connection with these products are to be used. (1) No directly applicable safety gear that is to be used during installation such as a safety harness when working from heights. (2) Ensure that the work area is free from obstructions and hazards, and to identify any obstructions or warnings that may not be clear. (3) Use a safe manner wearing protective gear such as gloves, goggles, headwear, footwear and earthing. When using tools comply with operator manual and instructions. (4) Maintain a safe distance from sharp edges and cut edges of the products. (5) Do not use these products in connection with any substance that is or may be harmful or corrosive to the products. (6) Inspect and maintain these products and the structural components that they are used in connection with on a regular basis using perfect tools when appropriate.

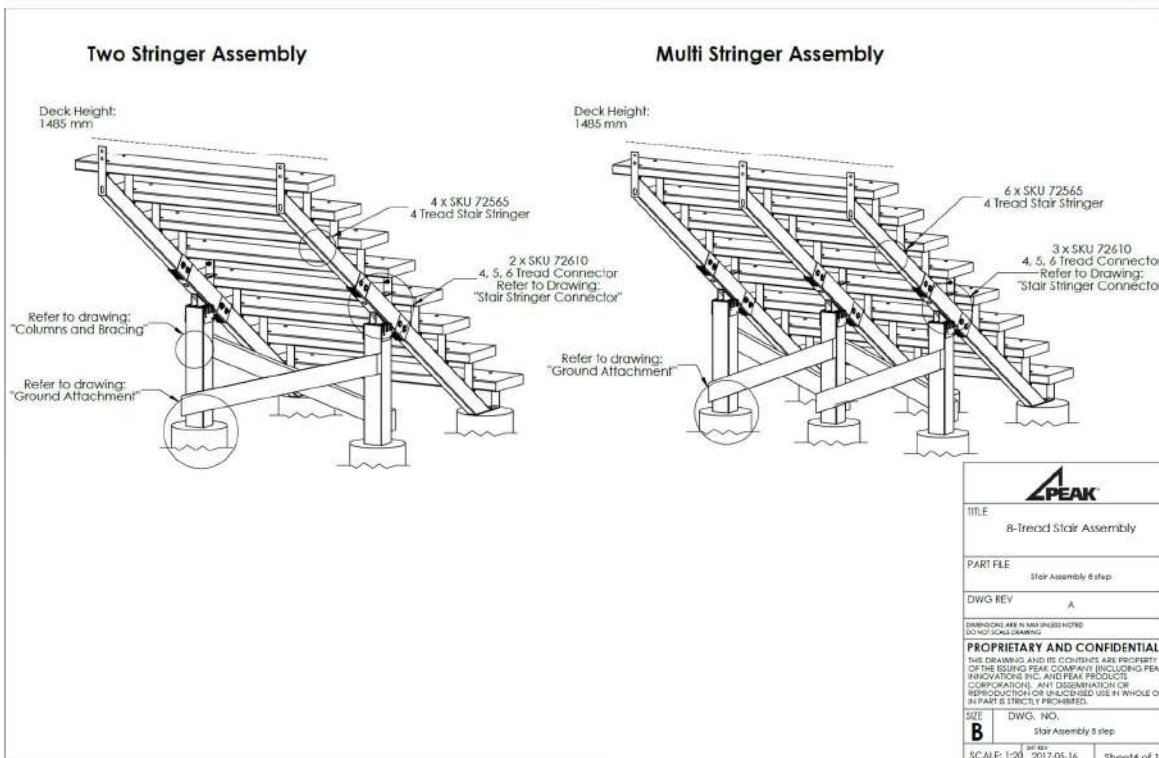
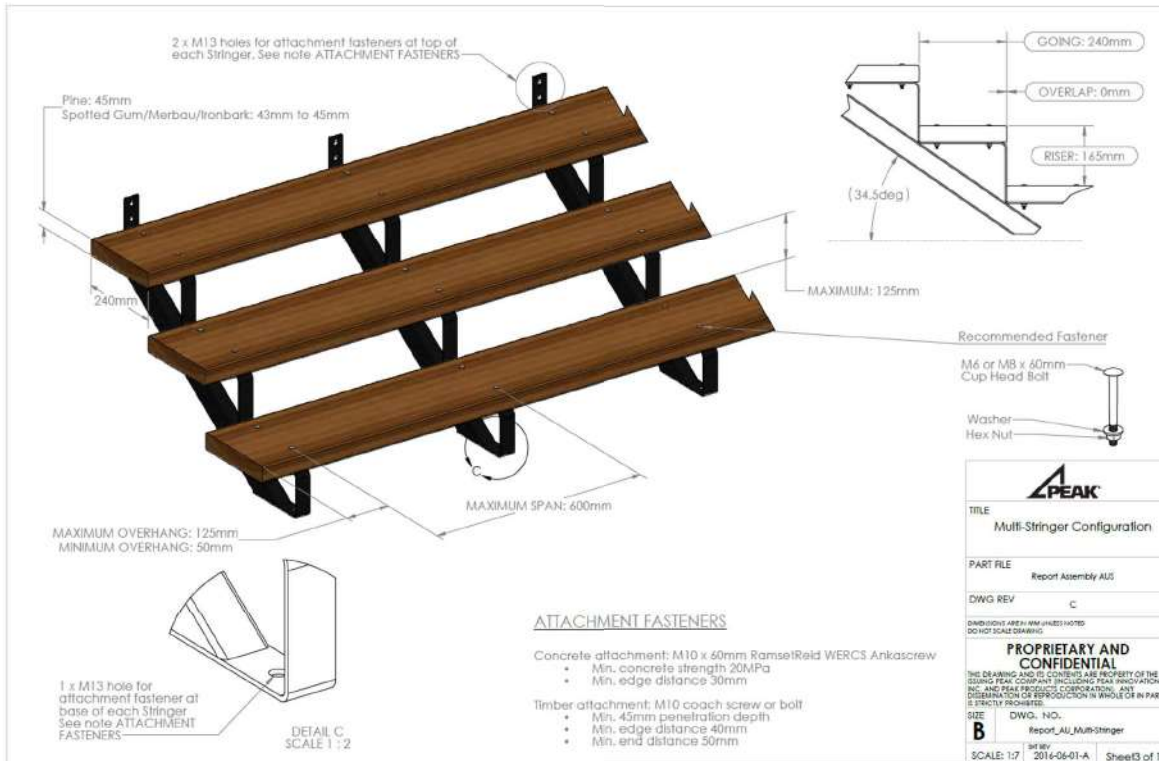
Peak Products Corporation shall not be liable for any loss or damage resulting from the improper installation or improper use of its products, subject to any contrary provision of the Australian Consumer Law in Australia. Peak products and associated materials are protected by patents, designs, copyrights and/or trademarks and under license from Peak Industries Inc.

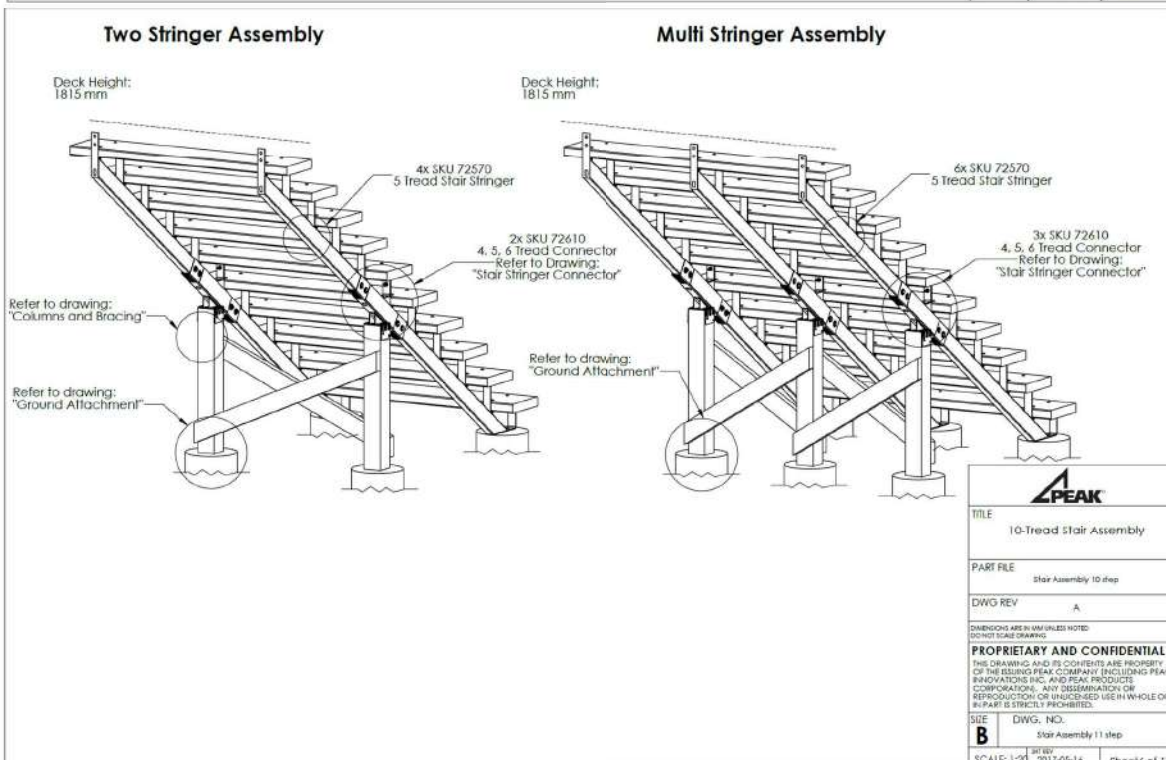
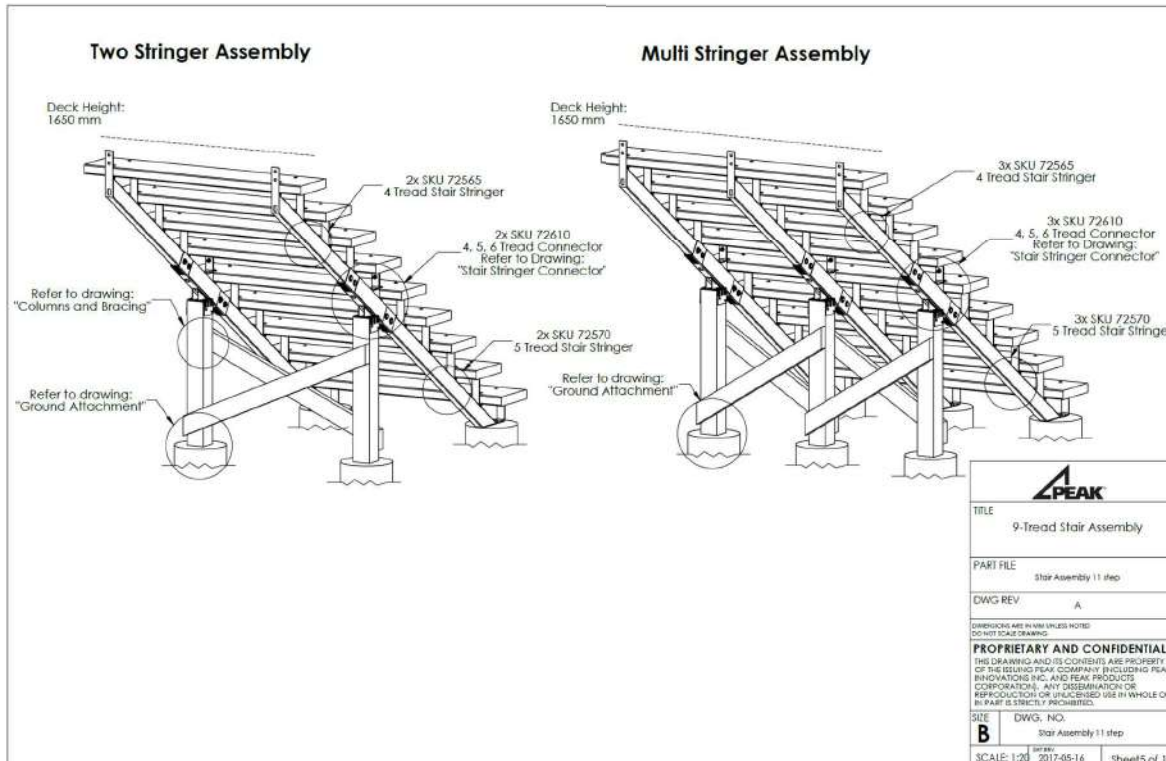
72610 SSC InstalGuide V1

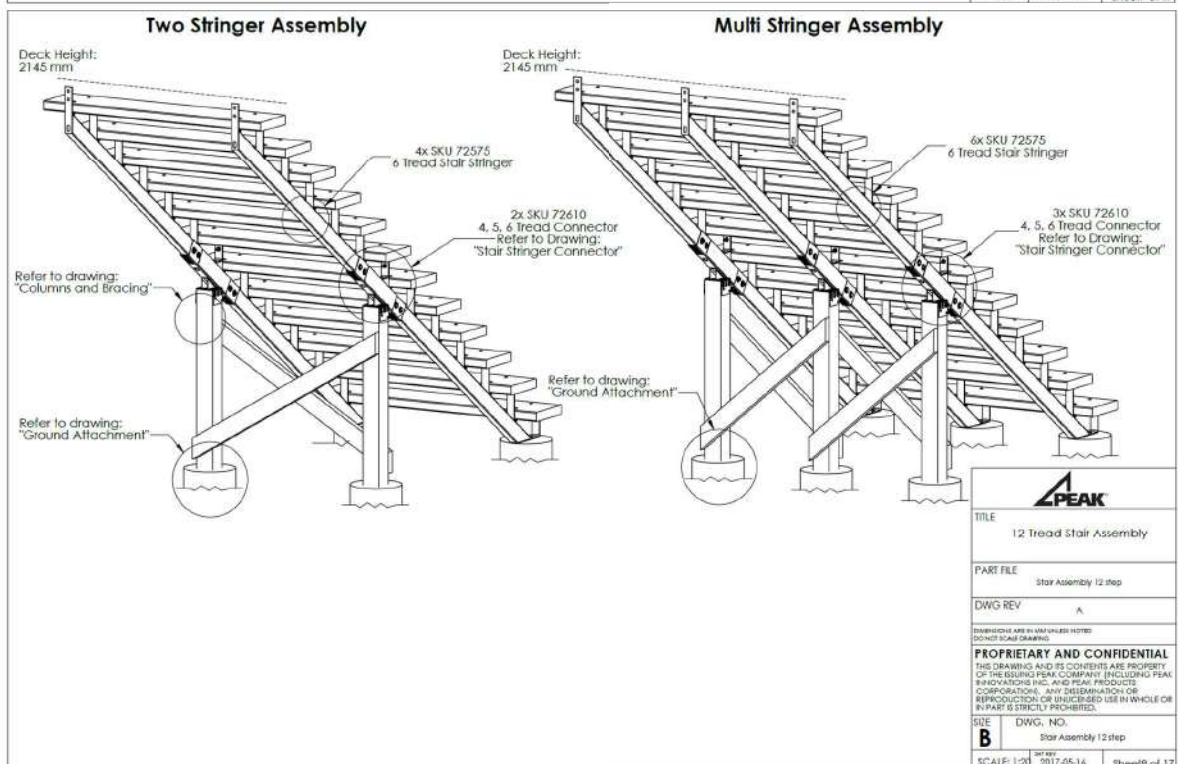
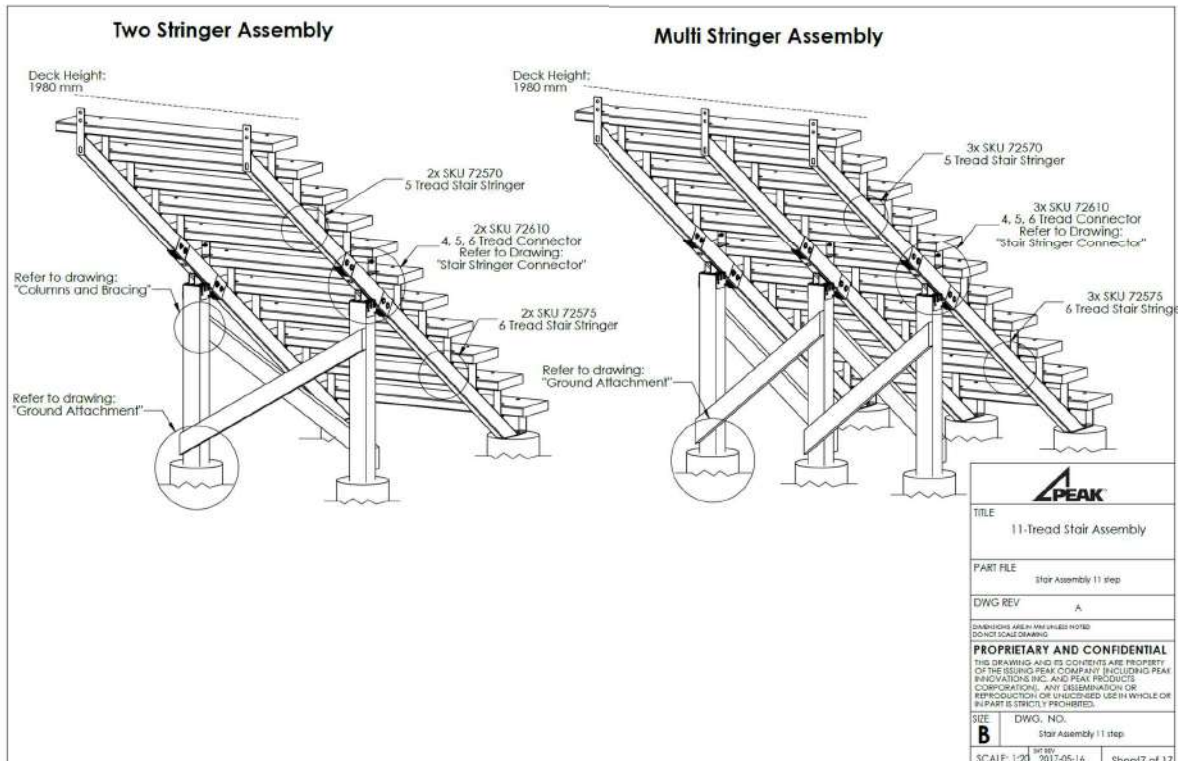


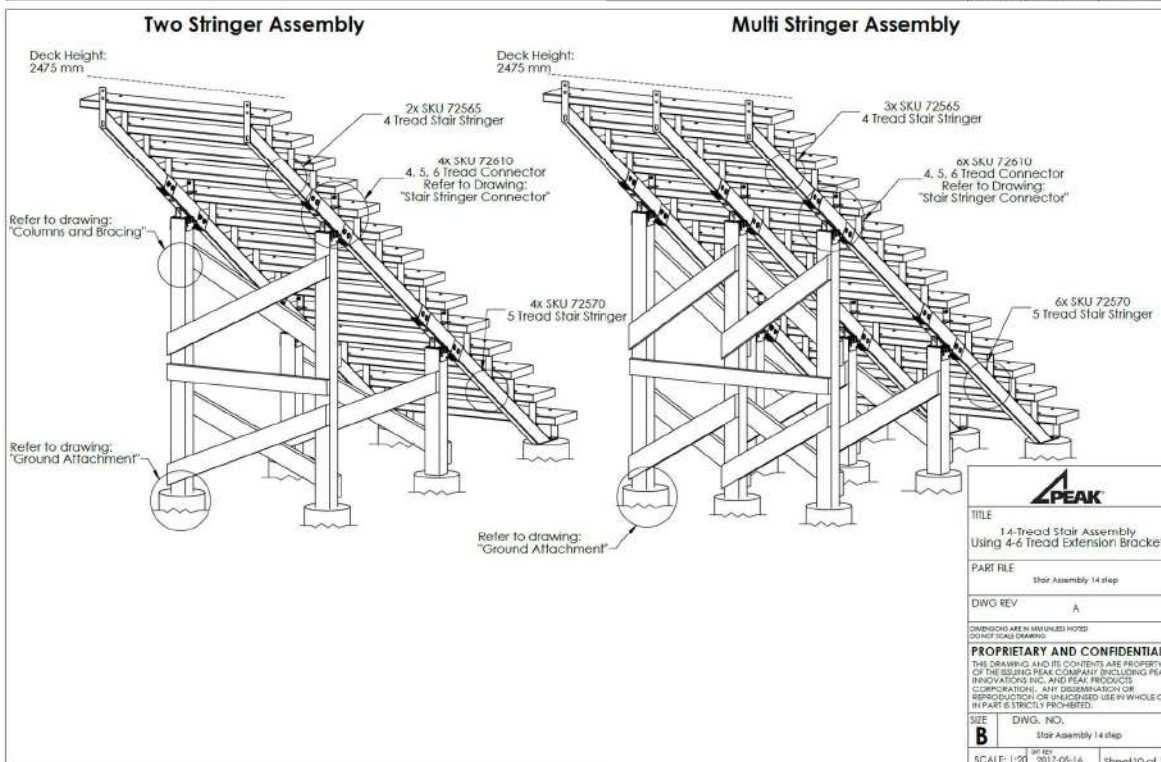
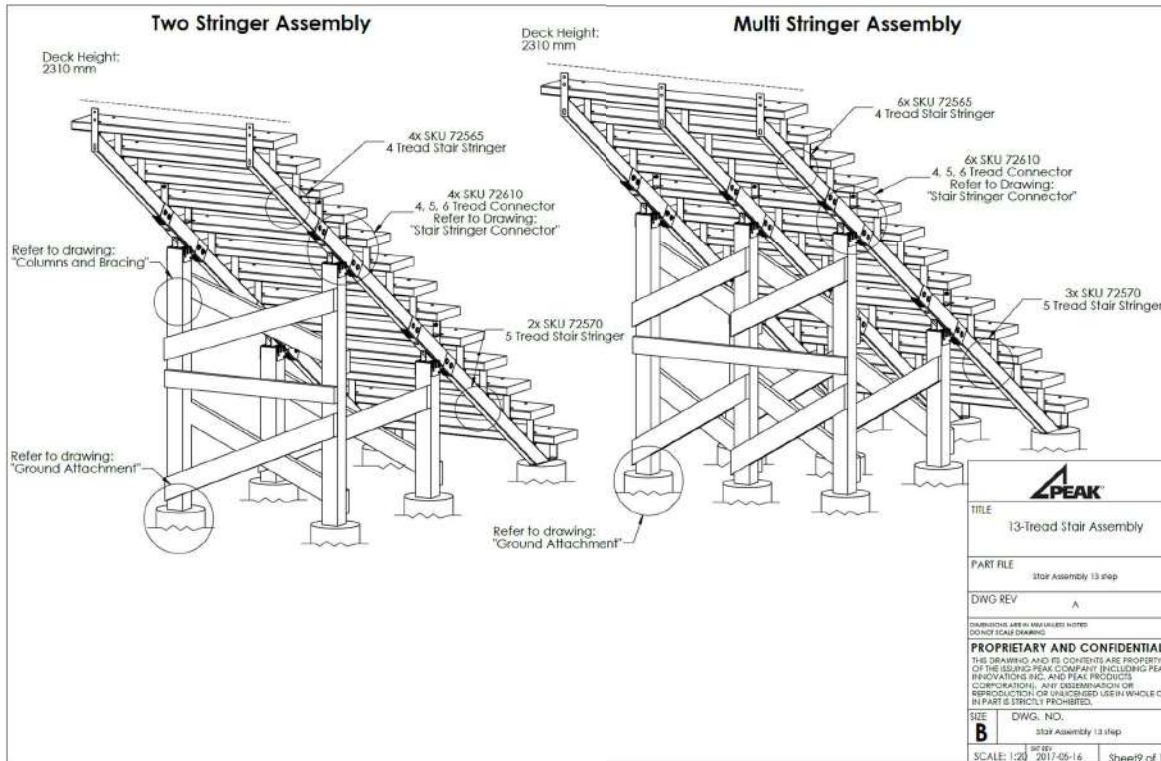
ATTACHMENT 4: Peak Stair Stringers and Stair Stringer Connectors Details

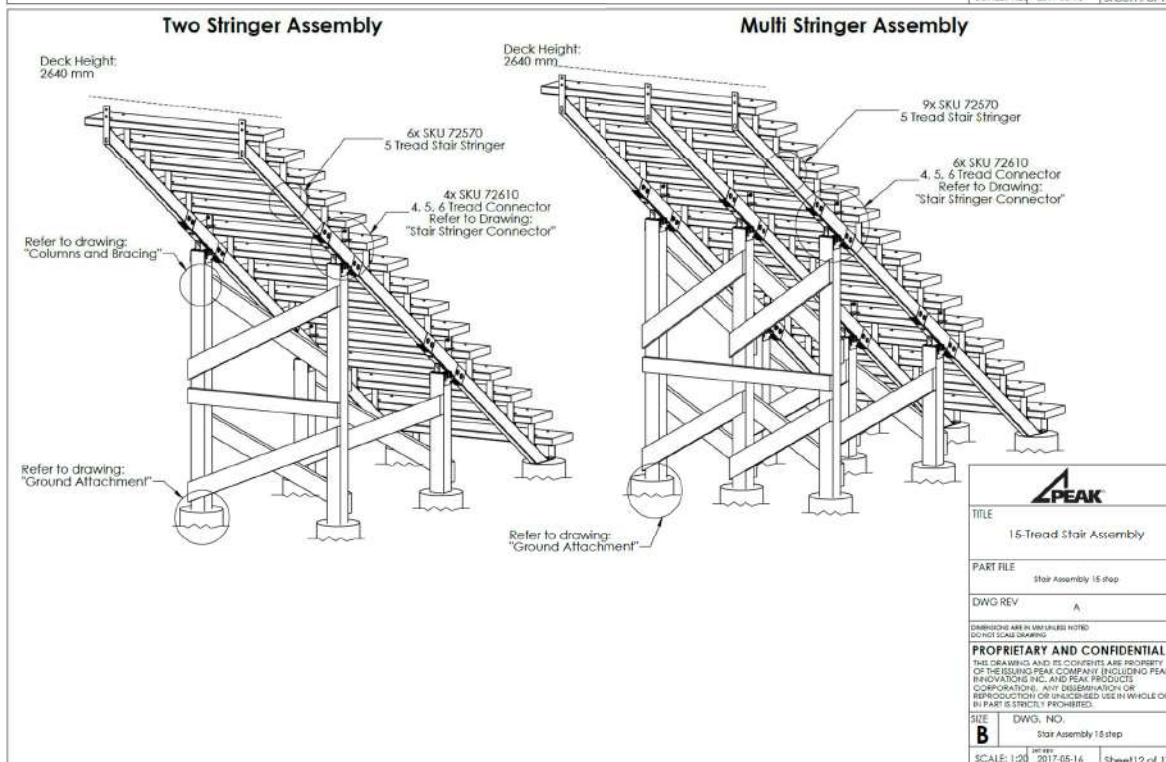
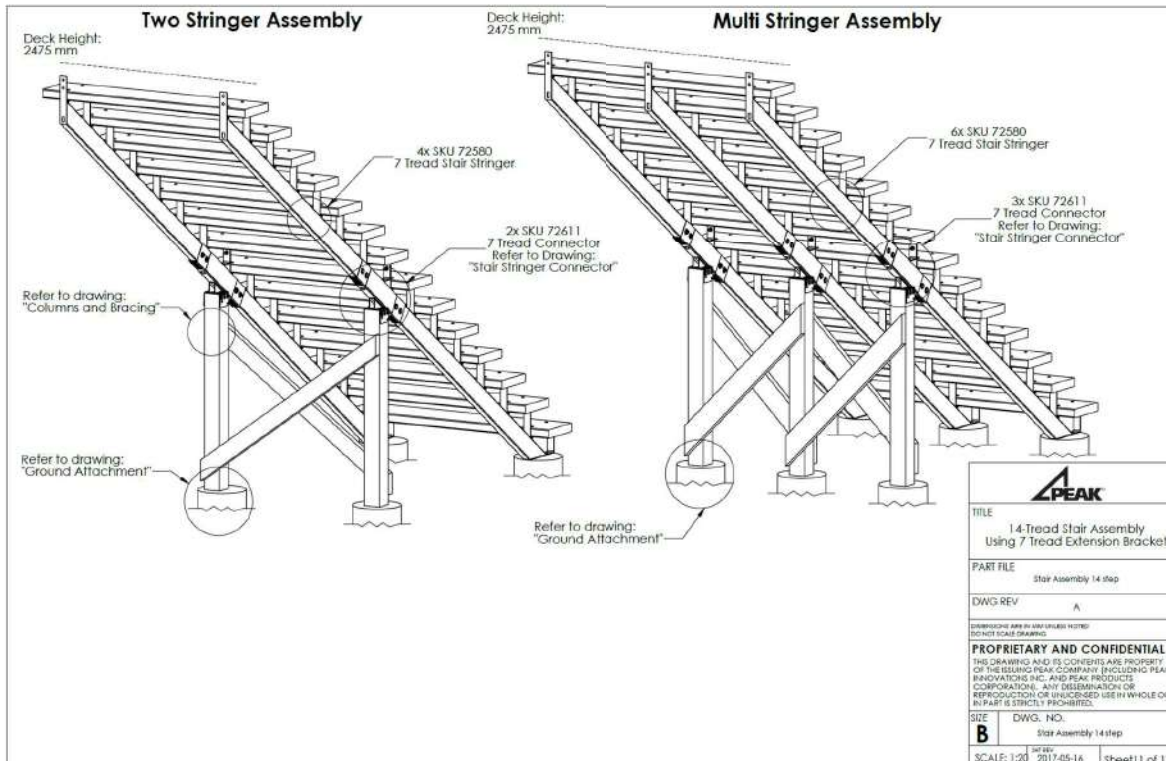


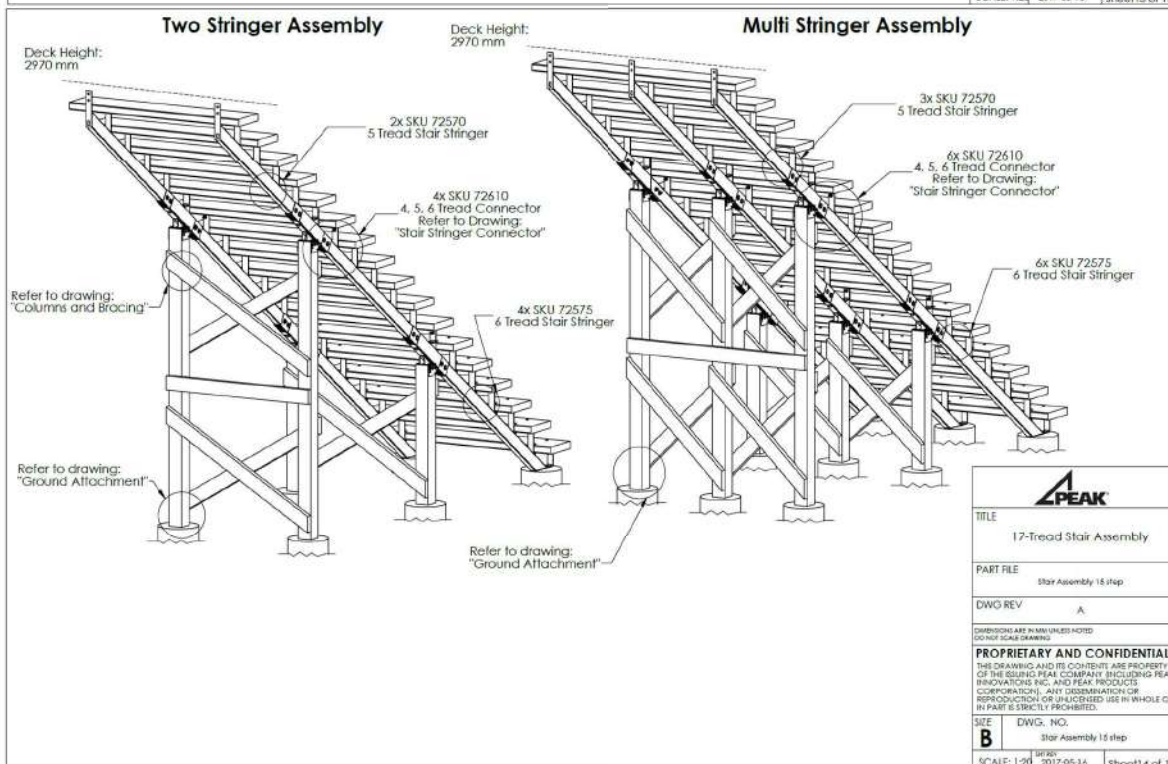
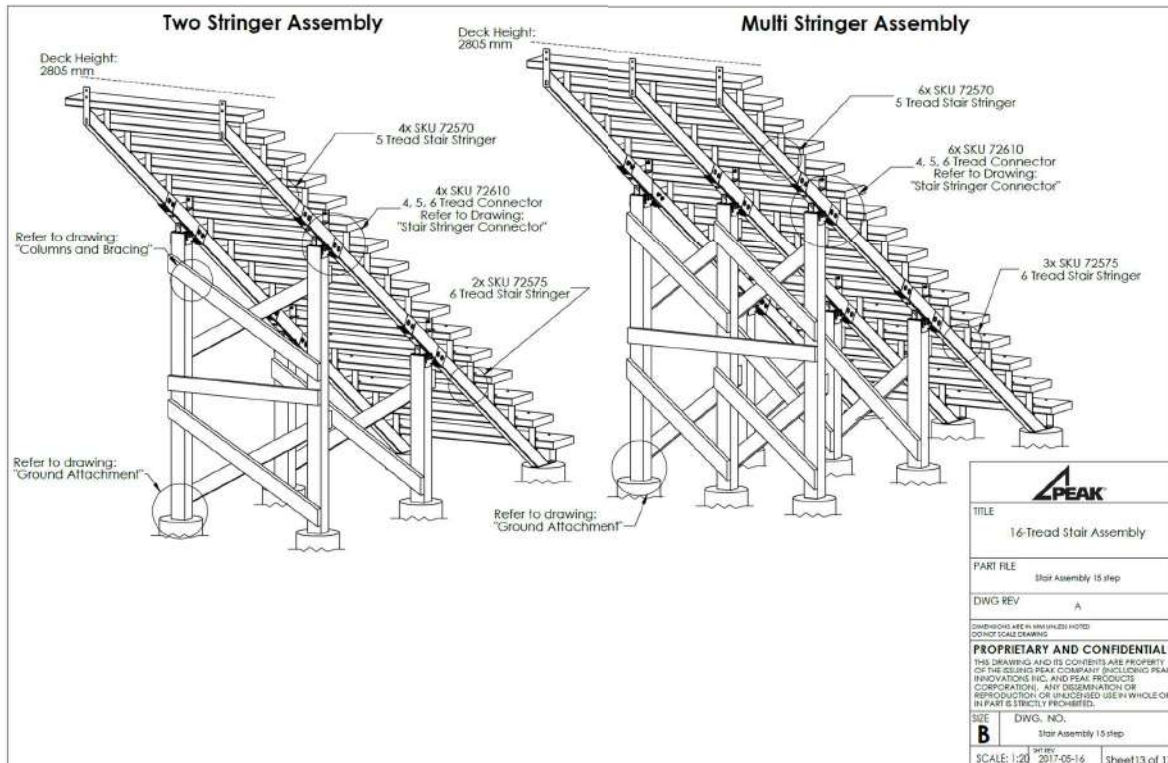


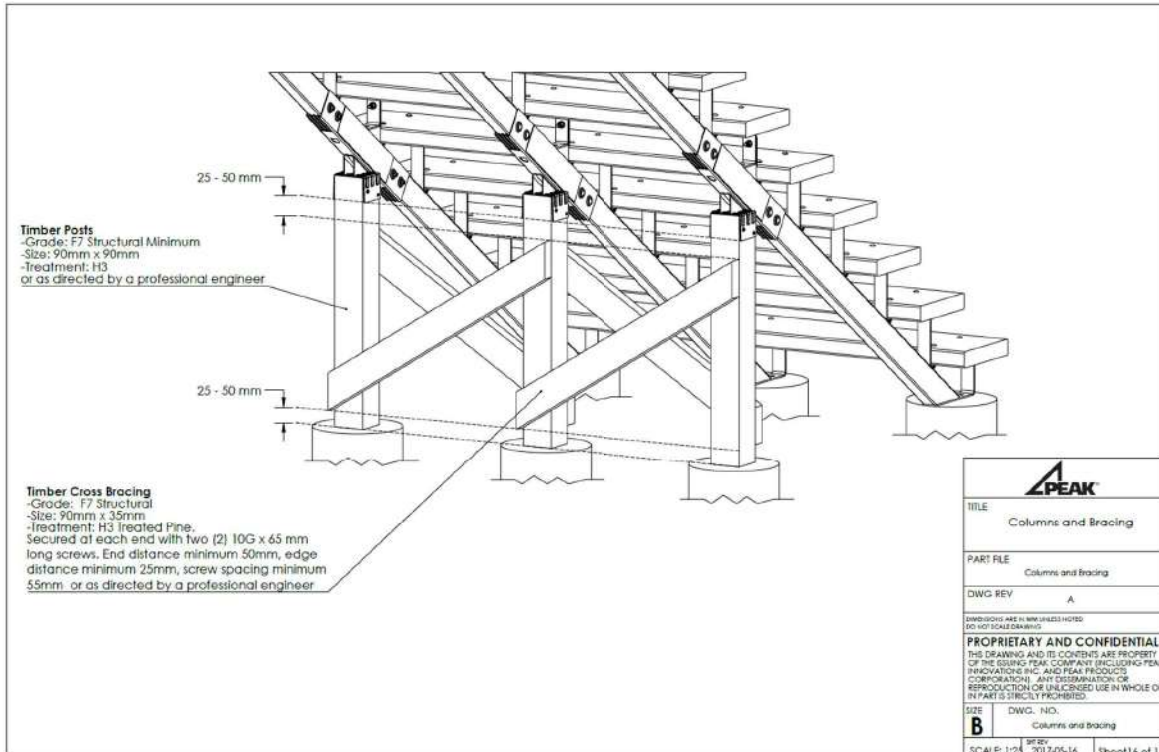
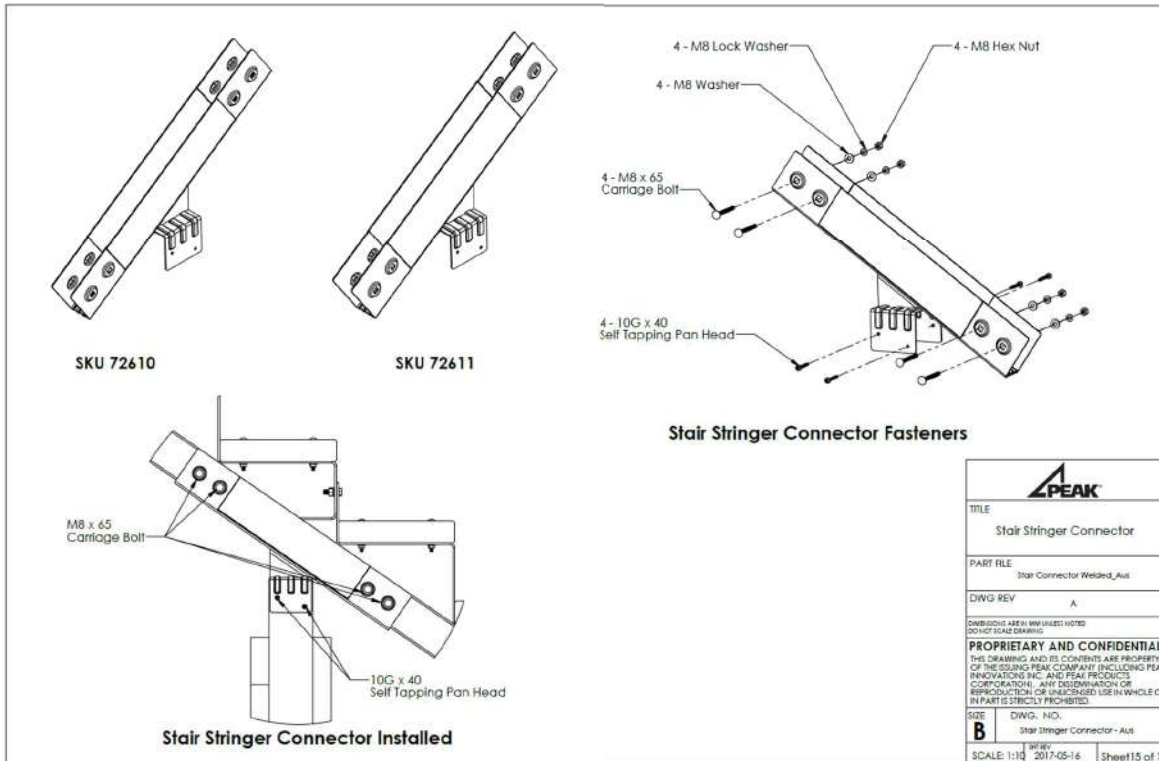






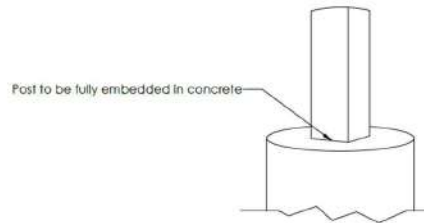








Ground Attachment Design



Concrete footings design shall comply with all relevant Building Code, Regulations, Standards, and Local Authority requirements.

TITLE Ground Attachment	
PART FILE 0 Step	
DWG REV A	
<small>DIMENSIONS ARE IN MM UNLESS NOTED (DO NOT SCALE DRAWING)</small>	
PROPRIETARY AND CONFIDENTIAL <small>THIS DRAWING AND ITS CONTENTS ARE PROPERTY OF THE ISSUING PEAK COMPANY (INCLUDING PEAK INNOVATIONS INC. AND PEAK PRODUCTS CORPORATION). ANY DISSEMINATION OR REPRODUCTION OR UNAUTHORIZED USE IN WHOLE OR IN PART IS STRICTLY PROHIBITED.</small>	
SIZE B	DWG. NO. Ground Attachment-Aus
SCALE: 1:24	DATE: 2017-05-16 Sheet 17 of 17